





General description

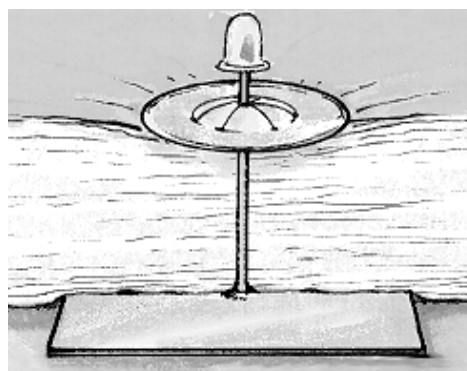
NSC, CL, CAP and W-PCAP-Z are washers designed to secure the insulation material on the hangers and for the protection of people on jobsites.



Technical specification

	NSC	CL	CAP SS/ALU	W-PCAP-Z
				
Material	PE (Polyethylene)	Galvanized spring steel or 304 stainless steel (316 on request)	Washer : stainless steel CAP-SS : stainless steel dome CAP-ALU : aluminium dome	Washer : galvanized steel Dome : plastic
Diameter	NSC-2 for pins dia. 2 - 2,2mm NSC-27 for pins dia. 2,7 - 3mm	External dia. : 30mm - 38mm For pins dia. 2- 2,2 -2,7 -3 - 4mm	External dia. : 22mm CAP-2 for pins dia. 2mm CAP-27 for pins dia. 2,7mm	External dia. : 40mm For pins dia. 2 - 2,7 - 3mm
Color	Transluscent	Zinc grey	Aluminium natural color (other colors on request)	White (black also available)
Storage and safety precautions	Store in original packaging in a dry place.			

Application



Information contained herein is based on careful tests and experience. It reflects our knowledge and is for guidance purpose only. It is given in good faith and user should ensure that the product is fit for purpose before any application. The quoted values are average and should not be taken as maximum or minimum values for specific purposes. Manufacturer and distributor are not responsible for any non-recommended use or consequential damage.