

**General description**

The serie CAR / I-CAR / O-CAR are back draught shutters designed for circular air duct systems. They prevent air intake into the building when fans stop working. Back draughts shutters open when fans are functioning and close automatically when fans start working again.

**CAR / I-CAR** : inline back draught shutters

**O-CAR** : coupling back draught shutter

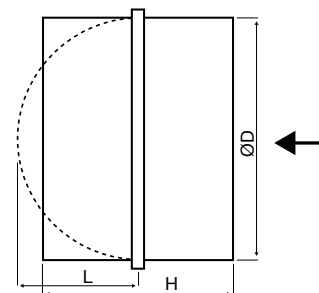
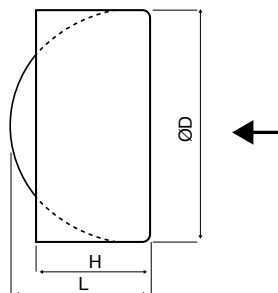


**Technical specification**

- Temperature usage: up to 50°C
- Body made of galvanized steel and flaps made of aluminium
- Mounted with black sealing gasket
- Shaft and springs made of stainless steel
- Stainless steel available on request

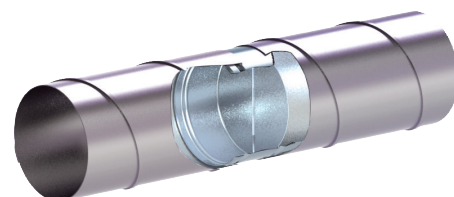
	ØD (mm)	H (mm)	L (mm)
<b>CAR 80</b>	78	37	39
<b>I-CAR 100</b>	99	49	48
<b>I-CAR 125</b>	124	49	62
<b>I-CAR 150</b>	149	49	73
<b>I-CAR 160</b>	159	49	78
<b>I-CAR 200</b>	199	49	98
<b>CAR 250</b>	247	120	123
<b>CAR 315</b>	312	160	156
<b>CAR 355</b>	352	160	176
<b>CAR 400</b>	397	160	198

	ØD (mm)	H (mm)	L (mm)
<b>O-CAR 80</b>	-	-	-
<b>O-CAR 100</b>	99	88	48
<b>O-CAR 125</b>	124	88	62
<b>O-CAR 150</b>	149	88	73
<b>O-CAR 160</b>	159	88	78
<b>O-CAR 200</b>	199	88	98
<b>O-CAR 250</b>	249	128	123
<b>O-CAR 315</b>	314	128	156
<b>O-CAR 355</b>	354	198	176
<b>O-CAR 400</b>	399	198	198



CAR and I-CAR must be inserted fully into the duct.

O-CAR must be installed between two ducts.



Information contained herein is based on careful tests and experience. It reflects our knowledge and is for guidance purpose only. It is given in good faith and user should ensure that the product is fit for purpose before any application. The quoted values are average and should not be taken as maximum or minimum values for specific purposes. Manufacturer and distributor are not responsible for any non-recommended use or consequential damage.

## Application

- **CAR** and **I-CAR** shutters are easy to install **within** the duct. The air tightness is guaranteed by an **external** gasket tape.
- **O-CAR** are easy to install **between** two ducts. The air tightness is guaranteed by an **internal** gasket.
- Recommended to be installed in horizontal ducting and shaft axis in vertical position.
- Always double-check the flaps' opening direction, so that flaps open when fans are functioning.
- They should be operated at ambient temperature up to 60°C, for transportation of clean air free of dust, grease, chemical vapors and other impurities.

