

**General description**

Circular external louvre for air exhaust or supply made of stainless steel. The louvre is equipped with bird mesh preventing insects and small animals to enter the duct network. The raincap is preventing the water to enter inside the duct. The G-REL-SS is light and easy to install.

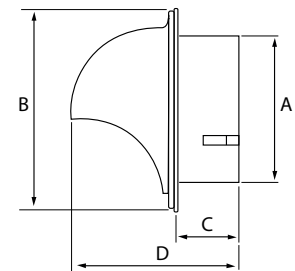
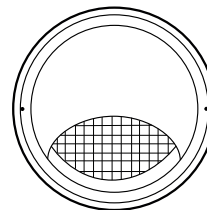


**Technical description**

- Made of stainless steel SS304 - natural color - brushed finish
- Delivered with 1 gasket sealing, 2 stainless steel screws and 1 stainless steel drip nose

**Technical specification**

Type	A (mm)	B (mm)	C (mm)	D (mm)
G-REL-SS-100	95	150	42	125
G-REL-SS-125	120	190	48	145
G-REL-SS-150	145	210	55	165
G-REL-SS-160	155	210	55	165
G-REL-SS-200	198	270	60	205



Q <sup>(1)</sup>	Type <sup>(2)</sup>	100	125	150	160	180	200
<b>30</b>	PS <sup>(3)</sup>	4					
<b>60</b>		14	9	3			
<b>80</b>		28	9	6	5		
<b>110</b>		53	18	12	8		
<b>130</b>		20	21	10	6	5	
<b>190</b>		42	47	15	8	8	
<b>220</b>		65	29	11	10		
<b>340</b>		66	25	24			
<b>430</b>		46	45				
<b>570</b>		67	66				

<sup>(1)</sup> Q = Air volume in m<sup>3</sup>/h

<sup>(2)</sup>Type = Connection diameter in mm

<sup>(3)</sup>Ps = Static pressure loss in Pa